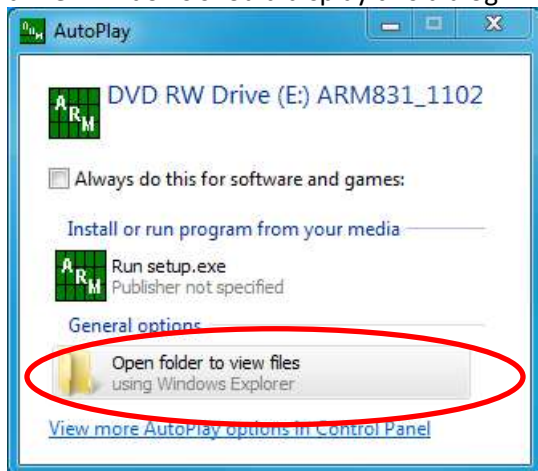


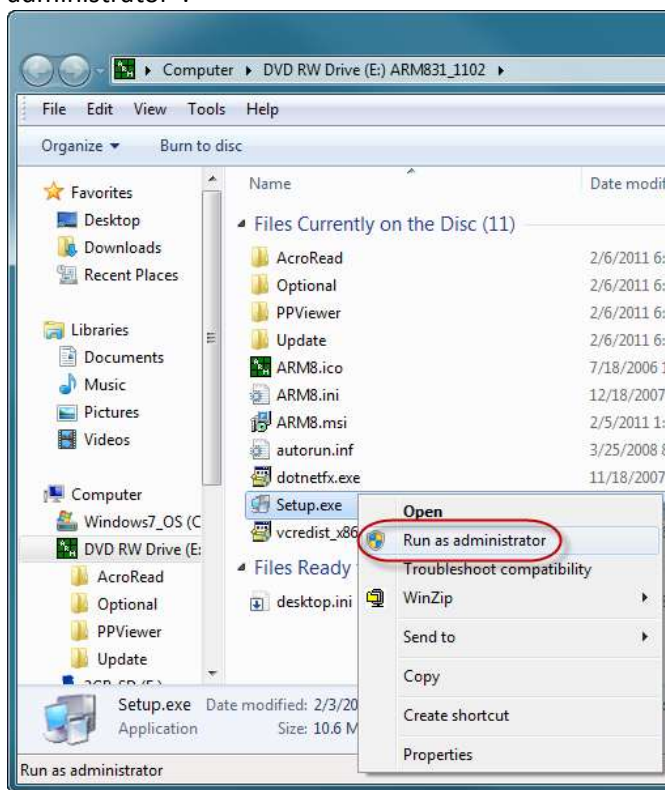
Start ARM 8 Install CD as Administrator

1. Insert the ARM 8 installation CD into the CD/DVD drive. Windows should display this dialog:



2. Select "open folder to view files"

3. Right-click on Setup.exe and choose "Run as administrator":



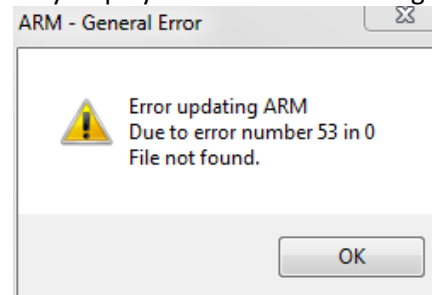
4. Select "Allow" when asked whether to run Setup.exe.

5. Select "Finish" after setup is completed:



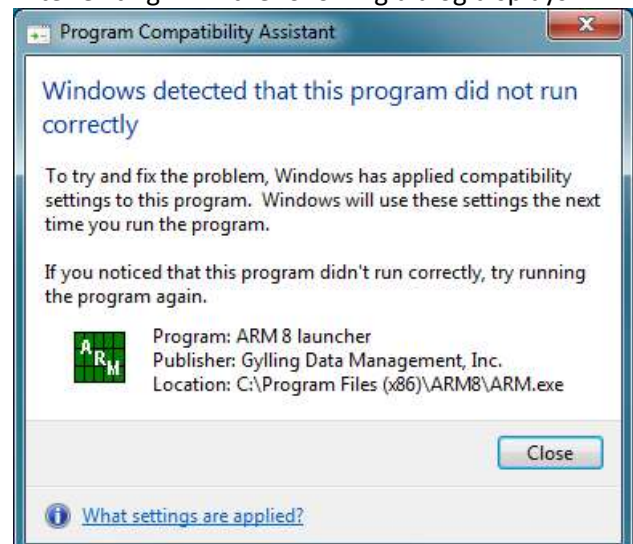
After installing from CD, let ARM check for updates, to ensure the most recent version is installed. (GDM free support is only for the newest released ARM version.)

After starting ARM and installing license, and then running Help - Check for Updates, the following error may display if Windows is blocking some needed paths:



Select "OK" to close the dialog.

After exiting ARM the following dialog displays:



Now start ARM again, and confirm that Help - Check for Updates runs without any error.