

New ARM 8 Features

by Gylling Data Management, Inc.

The Solution for Your Research Data Needs

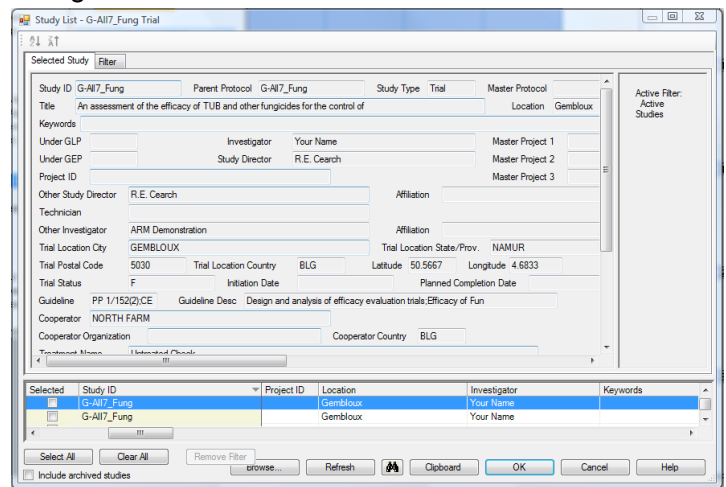
Website: www.gdmdata.com

Email: staff@gdmdata.com

ARM 8 will make you more efficient and effective in managing your research studies. It can help improve research quality, and reduce the time required to report results. With over 4 years in the making, ARM 8 has a clean new visual style that is much friendlier for an infrequent ARM user. It includes a multitude of new features and improvements relative to ARM 7. Someone familiar with ARM 7 will be immediately productive, since all ARM 7 commands and ways of working are fully supported in ARM 8.

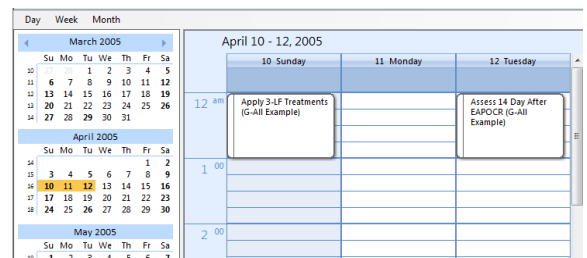
Study List is a table displaying key information about all ARM studies on your PC. The new ARM 8 study list design makes it much easier to view, search, select, and manage studies. New features include:

- Split-screen design shows study details on easy-to-read form view.
- More filters to find studies of interest.
- Easily locate trials containing specific treatment products, crops, or targets.
- Use new Filters tab to display list of all unique entries in each study list field, such as location or treatment name.
- File management features to archive, move, rename, or delete study files.
- Easily hide or display archived (completed) studies.
- Restore studies to a previous version, to rollback from an accidental change or file corruption caused by a computer hardware failure. (See Automatic Backups for more information.)
- Launch file tasks from study list, such as printing reports or exporting results.



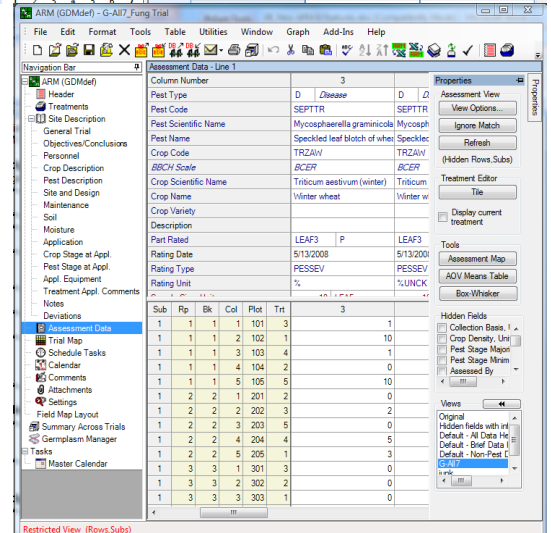
Tasks and Scheduling

- Study calendar displays scheduled tasks for current study in an Microsoft Outlook style calendar, with choices of day, week, month, and custom views.
- Master calendar shows scheduled tasks for all trials, with the same view options as for study calendar.

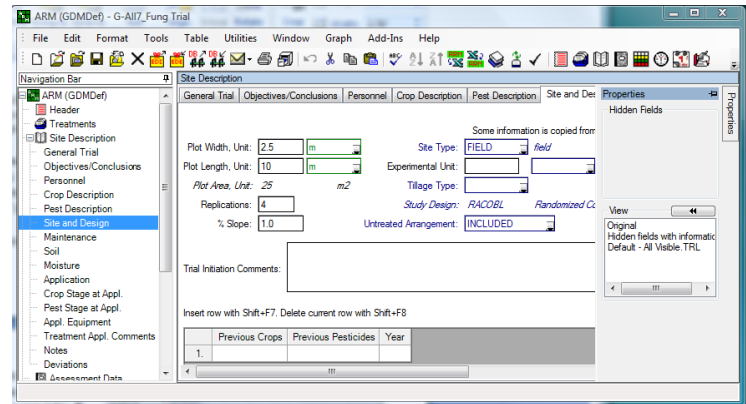


Study Editors

- Navigation bar shows new study editors, offering a simple one click method to view each editor.
- Split ARM desktop into horizontal or vertical panels, to display multiple editors.
- Schedule editor includes a grid view of tasks, to easily insert, move, and copy/paste tasks.
- New task categories of "Assigned to" and "Task length", with automatic assessment link to "Assessment Timing" for identifying completed tasks.
- Assessment editor includes a dockable properties dialog with auto-hide.

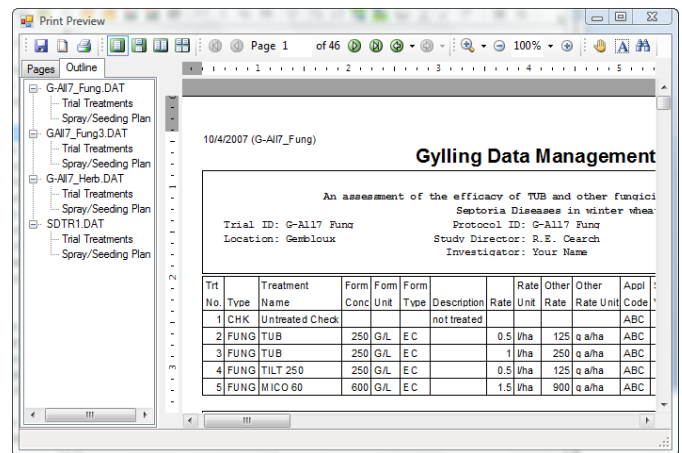


- Site description editor fully supports displaying and printing proportional fonts. Editor uses a new one row tab list to easily switch between tabs.
- Navigation bar at left lists all site description tabs in a fixed order (an often requested feature).
- Prompts and entry fields are aligned into logical columns on site description and protocol description.
- Prompt columns automatically adjust for different language translation prompt lengths.
- Site and protocol description editors use the current editor font (Tools - Options - Display), the same as other ARM study editors.



Reports

- Adjusting margins or changing page orientation on Print Preview dialog automatically repaginates report.
- New choices to view report thumbnails, zoom, display pages, and select text on Print Preview.
- Print reports to Adobe PDF files with a single button click using included PDF writer.
- Tree view of reports and studies on Print Preview dialog, to easily display a selected report page.
- Automatically create a PDF copy of every printed report, to keep a permanent electronic record.
- Select treatments, assessment columns, and data header rows to print with simple mouse clicks.



Automatic Backups

Study list file management features include automatic backup of study files, providing data protection against hardware problems or accidental study changes.

Help

A new media clips toolbar icon and help menu choice offers easy access to short media clips demonstrating how to perform typical tasks in ARM. Users should require less training and support to use ARM 8 because of the interface and help enhancements.

System Requirements

ARM 8 requirements are based on minimum software required to support Microsoft .NET 2.0 runtime, plus hardware to provide adequate software performance for typical tasks. Recommended system configuration is:

- Windows XP, Windows Vista, or Windows 7
- 1 GHz or faster processor
- 512 MB or more of RAM (2 GB minimum recommended for Vista and Windows 7)
- 400 MB available hard disk space
- 1024 x 768 or higher display resolution
- Mouse or pointing device
- CD-ROM or DVD-ROM to install program and license
- Printer
- Recommend one physically separate drive (USB flash drive, second hard drive, or network drive) for archiving and backing up ARM studies
- Optional USB connection for Psion Workabout Pro or other data collector
- Print to Excel, Push/Pull, and Report Link features require Microsoft Excel 2003 or newer
- Send To feature requires a MAPI-enabled email program such as Microsoft Outlook